

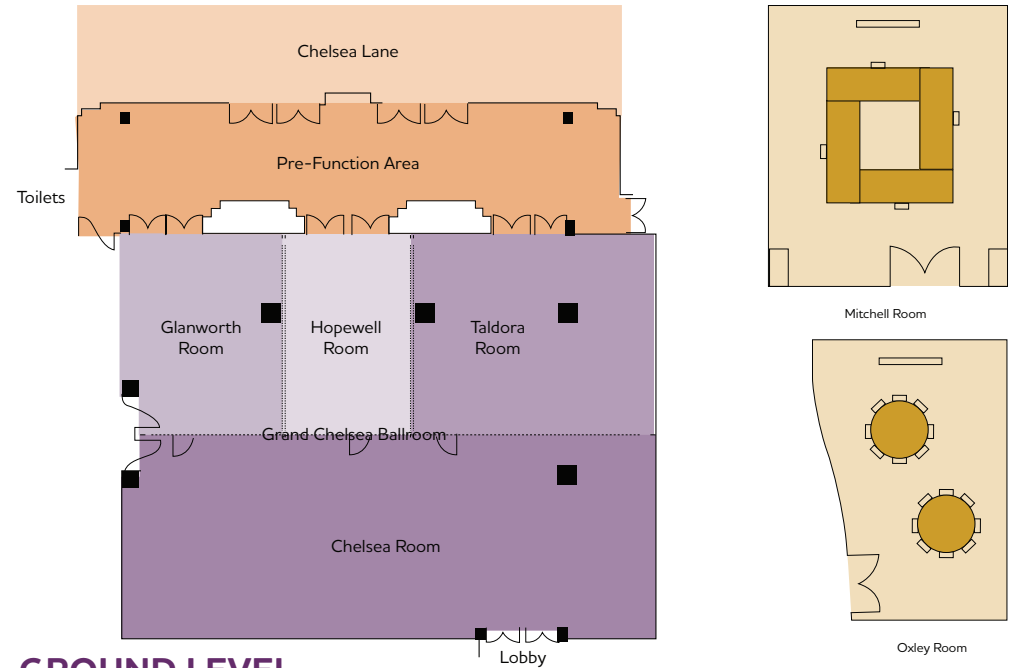
# MINDFUL MEETINGS

Mercure Brisbane's spacious and versatile event spaces, allow you to host exhibitions and conferences with up to 640 delegates in the Grand Chelsea Ballroom. If you have a masterpiece or even a vehicle that you would like to showcase at your event, this space is perfect for you!

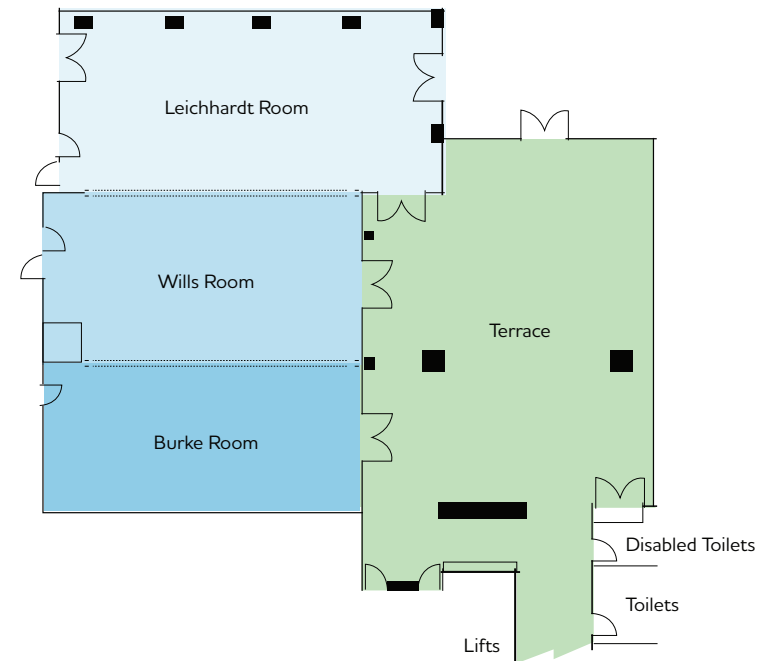
Spice up your day and enjoy a breath of fresh air in Chelsea Lane, our alfresco event space! From sit-down dinners to carnival-style events, Chelsea Lane can host up to 300 guests. If you are planning something a little more intimate, we have a range of function rooms to suit your needs.

To create your ideal event experience, contact our team of event professionals today and we will assist you in delivering success and a memorable experience!

	AREA (M <sup>2</sup> )	HEIGHT (M)	THEATRE	U-SHAPE	BOARD ROOM	CLASS ROOM	CABARET	BANQUET WITHOUT DANCE FLOOR	BANQUET WITH DANCE FLOOR	COCKTAIL
<b>GROUND LEVEL</b>										
Oxley	39	2.4	38	15	18	21	24	30		35
Mitchell	36	2.4	32	15	12	21	16	20		30
Glanworth	93	3.5	90	27	30	51	48	60	40	70
Hopewell	80	3.5	90	27	30	45	48	60	40	65
Taldora	148	3.5	120	27	30	69	72	90	60	120
Chelsea	322	3.5	300	72		168	152	190	140	250
Grand Chelsea Ballroom	645	3.5	640			324	352	440	400	600
Chelsea Lane	246	6.3						150	130	200
<b>LEVEL 2</b>										
Burke	79	3.15	80	27	30	48	48	60	40	55
Wills	92	3.15	90	27	30	54	48	60	40	70
Leichhardt	116	3.15	120	33	36	78	64	80	60	100
Burke Wills Leichhardt	287	3.15	280			180	160	200	140	225



**GROUND LEVEL**



**LEVEL 2**